

From yourfirstvisit.net

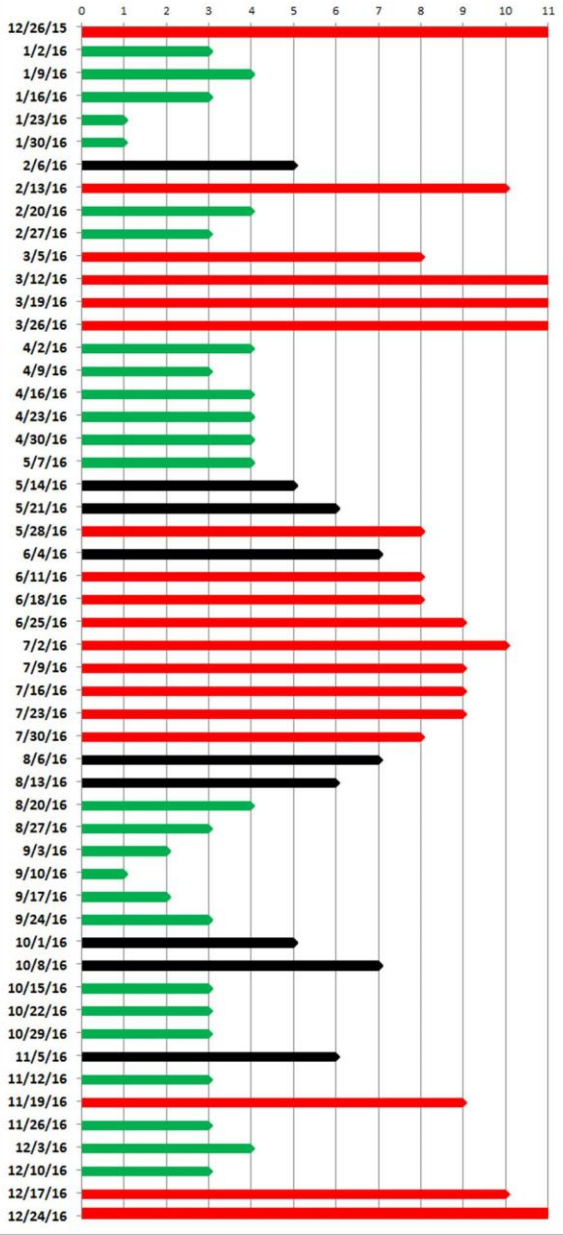
yourfirstvisit.net's Walt Disney World 2016 Weeks to Visit Rankings

Arrival Date	Week Rank	Comments	Crowd Ranking	Crowds	Values Prices	Moderates Prices	Deluxes Prices	Other	180 Days Before
December 26, 2015	46		11 Highest	Highest	Highest	Highest	Highest	Xmas Program	06/29/15
January 2, 2016	51		3 Low	Low	Low	Moderate-minus	Moderate-minus	Ride Closures Common	07/06/15
January 9, 2016	52	Marathon	4 Low-Plus	Low	Low	Low	Low	Ride Closures Common	07/13/15
January 16, 2016	50	MLK 1/18	3 Low	Low	Low	Low	Low	Ride Closures Common	07/20/15
January 23, 2016	48		1 Lowest	Lowest	Lowest	Lowest	Lowest	Ride Closures Common	07/27/15
January 30, 2016	49		1 Lowest	Lowest	Lowest	Lowest	Lowest	Some Ride Closures	08/03/15
February 6, 2016	53	Mardi Gras 2/9	5 Moderate-Minus	Moderate	Moderate	Moderate-plus	Moderate-plus	Some Ride Closures	08/10/15
February 13, 2016	41	President's Day 2/15	10 Higher	Higher	Higher	Higher	Higher		08/17/15
February 20, 2016	14		4 Low-plus	Moderate	Moderate	Moderate-plus	Moderate-plus		08/24/15
February 27, 2016	8		3 Low	High	High	Moderate-plus	Moderate-plus		08/31/15
March 5, 2016	34		8 High-minus	High	High	High	High		09/07/15
March 12, 2016	43		11 Highest	High	High	High	High		09/14/15
March 19, 2016	45	Easter 3/27	11 Highest	Highest	Highest	Highest	Highest		09/21/15
March 26, 2016	44	Easter 3/27	11 Highest	Highest	Highest	Highest	Highest		09/28/15
April 2, 2016	15		4 Low-plus	Moderate	Moderate	Moderate-plus	Moderate-plus		10/05/15
April 9, 2016	7		3 Low	Moderate	Moderate	Moderate-plus	Moderate-plus		10/12/15
April 16, 2016	10		4 Low-plus	Moderate	Moderate	Moderate-plus	Moderate-plus		10/19/15
April 23, 2016	11		4 Low-plus	Moderate	Moderate	Moderate-plus	Moderate-plus		10/26/15
April 30, 2016	12		4 Low-plus	Moderate	Moderate	Moderate-plus	Moderate-plus		11/02/15
May 7, 2016	13		4 Low-plus	Moderate	Moderate	Moderate-plus	Moderate-plus		11/09/15
May 14, 2016	16		5 Moderate-Minus	Moderate	Moderate	Moderate-plus	Moderate-plus		11/16/15
May 21, 2016	18		6 Moderate	Moderate	Moderate	Moderate-plus	Moderate-plus		11/23/15
May 28, 2016	33	Memorial Day 5/30	8 High-Minus	High	High	Moderate	Moderate		11/30/15
June 4, 2016	21		7 Moderate-Plus	High	High	Moderate	Moderate-minus		12/07/15
June 11, 2016	32		8 High-Minus	High	High	Moderate	Moderate-minus		12/14/15
June 18, 2016	31		8 High-Minus	High	High	Moderate	Moderate-minus		12/21/15
June 25, 2016	38		9 High	High	High	Moderate	Moderate-minus		12/28/15
July 2, 2016	40	Fourth of July 7/4	10 Higher	Higher	Higher	Moderate	Moderate-minus		01/04/16
July 9, 2016	37		9 High	High	High	Moderate	Lower		01/11/16
July 16, 2016	36		9 High	High	High	Moderate	Lower		01/18/16
July 23, 2016	35		9 High	High	High	Moderate	Lower		01/25/16
July 30, 2016	30		8 High-Minus	High	High	Moderate	Lower		02/01/16
August 6, 2016	20		7 Moderate-Plus	High	High	Moderate	Lower		02/08/16
August 13, 2016	29		6 Moderate	Moderate-Minus	Moderate	Moderate	Lowest	Peak Hurricane Season	02/15/16
August 20, 2016	27		4 Low-plus	Low	Low	Moderate-minus	Lowest	Peak Hurricane Season	02/22/16
August 27, 2016	25		3 Low	Low	Low	Moderate-minus	Lowest	Peak Hurricane Season	02/29/16
September 3, 2016	23	Labor Day 9/5	2 Lower	Low	Low	Moderate-minus	Lowest	Peak Hurricane Season	03/07/16
September 10, 2016	22		1 Lowest	Low	Low	Moderate-minus	Lowest	Peak Hurricane Season	03/14/16
September 17, 2016	24		2 Lower	Moderate-Minus	Moderate	Moderate	Lower	Peak Hurricane Season	03/21/16
September 24, 2016	26		3 Low	Moderate	Moderate	Moderate-minus	Moderate	Peak Hurricane Season	03/28/16
October 1, 2016	28		5 Moderate-Minus	Moderate	Moderate	Moderate-plus	Moderate	Peak Hurricane Season	04/04/16
October 8, 2016	19	Columbus Day 10/10	7 Moderate-Plus	Moderate	Moderate	Moderate-plus	Moderate	Peak Hurricane Season	04/11/16
October 15, 2016	9		4 Low-plus	Moderate	Moderate	Moderate-minus	Low		04/18/16
October 22, 2016	5		3 Low	Low	Low	Moderate-minus	Low		04/25/16
October 29, 2016	6		3 Low	Low	Low	Moderate-minus	Moderate-minus		05/02/16
November 5, 2016	17	Jersey Week	6 Moderate	Low	Low	Moderate	Moderate-minus	Some Xmas Program	05/09/16
November 12, 2016	4		3 Low	Low	Low	Moderate	Moderate	Some Xmas Program	05/16/16
November 19, 2016	39	Thanksgiving 11/24	9 High	Moderate-plus	High	Moderate	Moderate-minus	Some Xmas Program	05/23/16
November 26, 2016	1		3 Low	Low	Low	Moderate-minus	Low	Xmas Program	05/30/16
December 3, 2016	2	Pop Warner Week	4 Low-plus	Low	Low	Moderate-minus	Low	Xmas Program	06/06/16
December 10, 2016	3		3 Low	Moderate-plus	High	High	High	Xmas Program	06/13/16
December 17, 2016	42		10 Higher	Higher	Higher	Higher	Higher	Xmas Program	06/20/16
December 24, 2016	47		11 Highest	Highest	Highest	Highest	Highest	Xmas Program	06/27/16
Arrival Date	Week Rank	Comments	Crowd Ranking	Crowds	Values Prices	Moderates Prices	Deluxes Prices	Other	180 Days Before

2016 Walt Disney World Cheat Sheet Page 2

From yourfirstvisit.net

CLICK TO ENLARGE yourfirstvisit.net's Disney World 2016 Crowd Calendar



<http://yourfirstvisit.net/2016-crowds>

Dates are "week beginning"

Disney World FastPass+ Lower-Crowd Itinerary 2016 Revision from yourfirstvisit.net

This does not work for all dates!!! See yourfirstvisit.net/itineraries

Meals:	Saturday	Sunday	Monday	Tuesday
Breakfast	Travel	Hotel Room*	Hotel Room*	Hotel Room*
Lunch	Travel	Flame Tree Barbecue	Backlot Express	11a Chef Mickey's
Dinner	7p Akerhus or San Angel Inn	Yak and Yeti	6p 50a Prime Time Cafe	6.15p Hoop-Dee-Doo Revue***
Parks:	Travel	Off	Off	Off
Early Morning	Travel	Off	Off	Off
Late Morning	Travel	Off	Off	Off
Early Afternoon	Check-in/at Epcot ASAP	At Animal Kingdom by noon	At Hollywood Studios by noon	At Magic Kingdom by noon
Late Afternoon	Epcot	Animal Kingdom	Hollywood Studios	Magic Kingdom
Evening	Epcot	Animal Kingdom	Hollywood Studios	Magic Kingdom
Later Evening	Epcot	Animal Kingdom	Hollywood Studios	Magic Kingdom
Notes:				
Parade	illum Nations	Rivers of Light**		
Evening Show				
Park-Open Target	n/a	n/a	n/a	n/a
FastPass+ to	Frozen Ever After**	Rivers of Light**, Expedition Everest, DINOSAUR	Toy Story Midway Mania, Star Tours, Frozen Sing-Along	Space Mountain, Buzz Lightyear, Jungle Cruise
Pre-schedule	Earth, and a Third			

DINING PLAN KEY

Underline =
Counter/Quick Service

Bold =
Table Service/Buffer

Italic =
Cash, not Dining Plan

Red =
Character Meal

Meals:	Wednesday	Thursday	Friday	Saturday	Sunday
Breakfast	Hotel Room*	Hotel Room*	Hotel Room*	Hotel Room*	Hotel Room*
Lunch	Hollywood Studios Counter	TBD Cinderella's Royal Table***	Sunshine Seasons	Magic Kingdom or Hotel Counter	Travel
Dinner	Hollywood Studios Counter	Magic Kingdom or Hotel Counter	Epcot or Hotel Counter	6p Crystal Palace	Travel
Parks:	Off	At Magic Kingdom by 8.15a	At Epcot by 8.15a	Off	At Animal Kingdom by 8.15a
Early Morning	Off	Magic Kingdom	Epcot	Off	Animal Kingdom
Late Morning	Off	Magic Kingdom	Epcot	Off	Travel
Early Afternoon	At Hollywood Studios by noon	Magic Kingdom	Epcot	At Magic Kingdom by noon	Travel
Late Afternoon	Hollywood Studios	Magic Kingdom	Epcot	Magic Kingdom	Travel
Evening	Hollywood Studios	Magic Kingdom	Epcot	Magic Kingdom	Travel
Later Evening	Hollywood Studios	Magic Kingdom	Epcot	Magic Kingdom	Travel
Notes:		Afternoon Parade		Evening Parade	
Parade				Wishes	
Evening Show	Fantasmic	Peter Pan	See text	n/a	Kilimanjaro Safaris
Park-Open Target	n/a				Festival of the Lion King, Kali
FastPass+ to	Rock 'n' Roller Coaster, Tower of Terror, Voyage of Little Mermaid	Seven Dwarfs Mine Train, Haunted Mansion, Belle	Test Track, Turtle Talk with Crush, and a Third	Big Thunder Mountain, Splash Mountain, Pirates of Caribbean	River Rapids, and a Third
Pre-schedule					

*Cereal, fruit, juice etc. in room **If open by your visit ***Two Table Service credits

Version 11/15

<http://yourfirstvisit.net/low>

Applies most weeks late August-late May, except after Thanksgiving through New Years, the week of Presidents Day, later March, and the weeks around Easter
See <http://yourfirstvisit.net/itineraries> for required changes and exceptions

From yourfirstvisit.net

Disney World FastPass+ Higher Crowd Itinerary Summer 2016 Revision from yourfirstvisit.net

This does not work for all dates!!! See yourfirstvisit.net/itineraries

Meals:	Saturday	Sunday	Monday	Tuesday
Breakfast	Travel	Hotel Room* Flame Tree Barbecue Yak and Yeti	Hotel Room* Backlot Express	Hotel Room* 11a Chef Mickey's
Lunch	Travel		6p 50s Prime Time Café	6.15p Hoop-Dee-Doo Revue***
Dinner	7p Akershus or San Angel Inn			
Parks:				
Early Morning	Travel	Off	At Hollywood Studios by 8.15a	At Magic Kingdom by 8.15a
Late Morning	Travel	Off	Hollywood Studios	Magic Kingdom
Early Afternoon	Check-in for Epcot ASAP	At Animal Kingdom by noon	Hollywood Studios	Magic Kingdom
Late Afternoon	Epcot	Animal Kingdom	Hollywood Studios	Magic Kingdom
Evening	Epcot	Animal Kingdom		
Later Evening				
Notes:				
Parade	IllumiNations	Rivers of Light**		
Evening Show	n/a	n/a	Rock 'n' Roller Coaster	Buzz Lightyear
Park-Open Target	Frozen Ever After**, Spaceship Earth, and a Third	Rivers of Light**, Expedition Everest, DINOSAUR	Toy Story Midway Mania, Star Tours, Frozen Sing-Along	Space Mountain, Tomorrowland Speedway, Jungle Cruise
FastPass+ to Pre-schedule				

DINING PLAN KEY

Underline = Counter/Quick Service

Bold = Table Service/Buffer

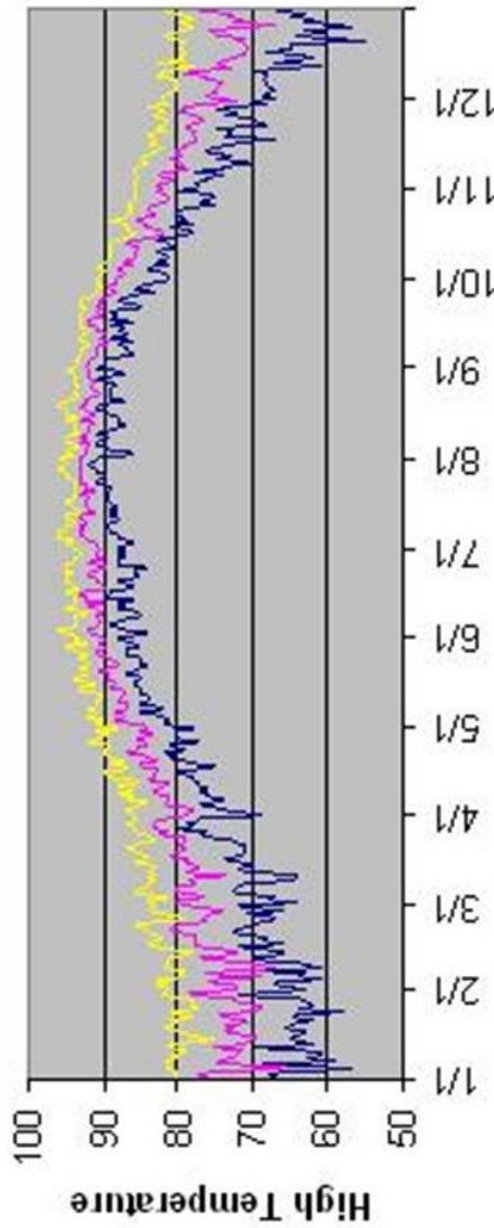
Italic = Cash, not Dining Plan

Red = Character Meal

Meals:	Wednesday	Thursday	Friday	Saturday	Sunday
Breakfast	Hotel Room*	Hotel Room*	Hotel Room*	Hotel Room*	Hotel Room*
Lunch	Hollywood Studios Counter	TBD Cinderella's Royal Table *** Magic Kingdom or Hotel Counter	Sunshine Seasons Epcot or Hotel Counter	Magic Kingdom or Hotel Counter	Magic Kingdom or Hotel Counter
Dinner	Hollywood Studios Counter		Epcot or Hotel Counter	6p Crystal Palace	
Parks:					
Early Morning	Off	At Magic Kingdom by 8.15a	At Epcot by 8.15a	At Magic Kingdom by 8.15a	At Animal Kingdom by 8.15a
Late Morning	Off	Magic Kingdom	Epcot	Magic Kingdom	Animal Kingdom
Early Afternoon	Off	Magic Kingdom	Epcot	Off	Travel
Late Afternoon	Hollywood Studios by 2p or so	Magic Kingdom	Epcot	Off	Travel
Evening	Hollywood Studios			Magic Kingdom	Travel
Later Evening					
Notes:					
Parade		Afternoon Parade		Evening Parade	
Evening Show	Fantasmic			Wishes	
Park-Open Target	n/a	Peter Pan	Soarin', But See text	Splash Mountain	Kilimanjaro Safaris
FastPass+ to Pre-schedule	Great Movie Ride, Tower of Terror, Voyage of Little Mermaid	Seven Dwarfs Mine Train, Haunted Mansion, Belle	Test Track, Turtle Talk with Crush, and a Third	Big Thunder Mountain, Pirates of Caribbean, Wishes	Festival of the Lion King, Kali River Rapids, and a Third

*Cereal, fruit, juice etc. in room **If open by your visit ***Two Table Service credits
Version 12/15

20th (Blue), 50th (Pink), and 80th (Yellow) Percentile High Temperatures



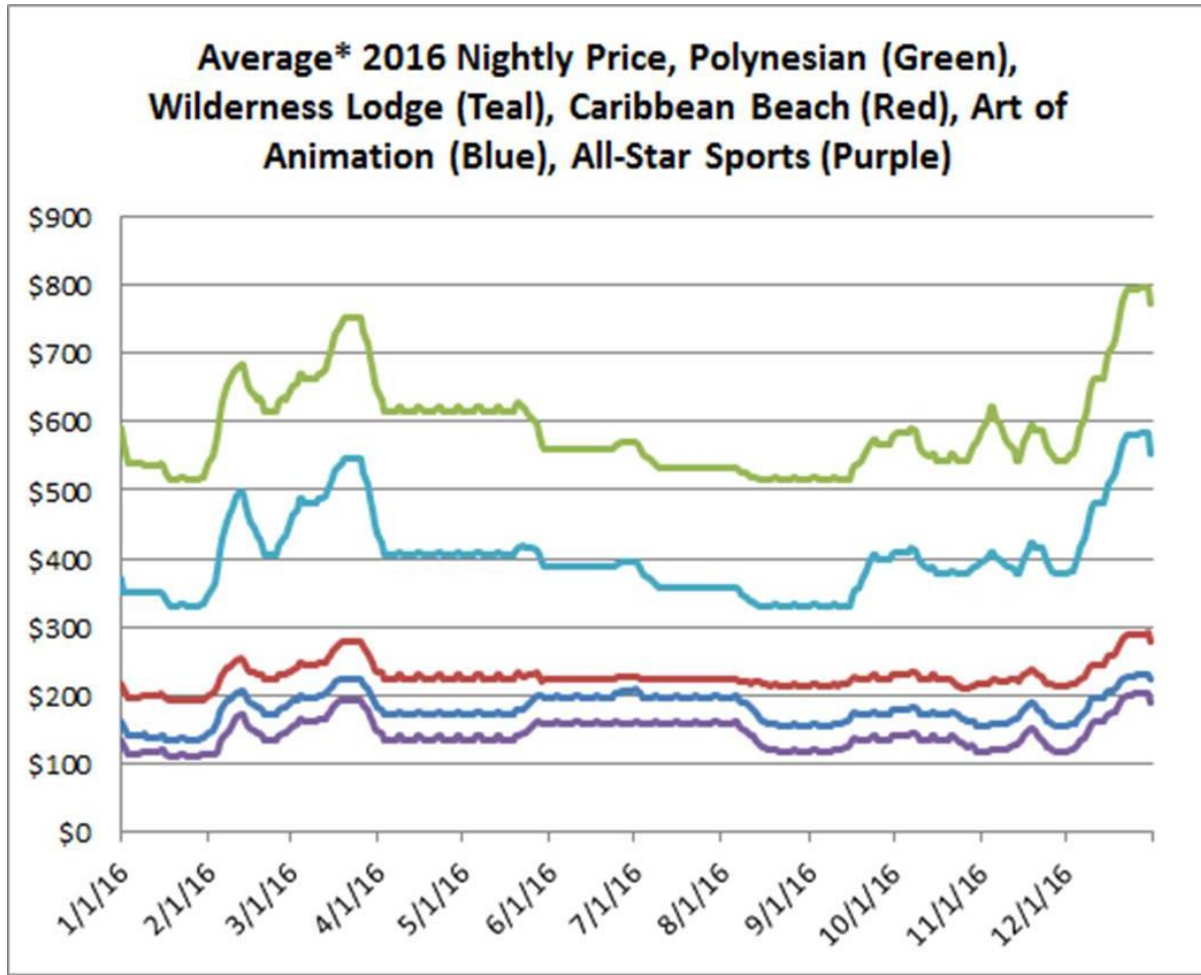
<http://yourfirstvisit.net/high>

Applies late May to late August, Thanksgiving, Presidents Day, later March, Easter and Xmas weeks.. See <http://yourfirstvisit.net/itineraries> for changes and exceptions.

<http://yourfirstvisit.net/weather>


Arrival Date	180 Days Before
2-Jan-16	6-Jul-15
9-Jan-16	13-Jul-15
16-Jan-16	20-Jul-15
23-Jan-16	27-Jul-15
30-Jan-16	3-Aug-15
6-Feb-16	10-Aug-15
13-Feb-16	17-Aug-15
20-Feb-16	24-Aug-15
27-Feb-16	31-Aug-15
5-Mar-16	7-Sep-15
12-Mar-16	14-Sep-15
19-Mar-16	21-Sep-15
26-Mar-16	28-Sep-15
2-Apr-16	5-Oct-15
9-Apr-16	12-Oct-15
16-Apr-16	19-Oct-15
23-Apr-16	26-Oct-15
30-Apr-16	2-Nov-15
7-May-16	9-Nov-15
14-May-16	16-Nov-15
21-May-16	23-Nov-15
28-May-16	30-Nov-15
4-Jun-16	7-Dec-15
11-Jun-16	14-Dec-15
18-Jun-16	21-Dec-15
25-Jun-16	28-Dec-15
2-Jul-16	4-Jan-16
9-Jul-16	11-Jan-16
16-Jul-16	18-Jan-16
23-Jul-16	25-Jan-16
30-Jul-16	1-Feb-16
6-Aug-16	8-Feb-16
13-Aug-16	15-Feb-16
20-Aug-16	22-Feb-16
27-Aug-16	29-Feb-16
3-Sep-16	7-Mar-16
10-Sep-16	14-Mar-16
17-Sep-16	21-Mar-16
24-Sep-16	28-Mar-16
1-Oct-16	4-Apr-16
8-Oct-16	11-Apr-16
15-Oct-16	18-Apr-16
22-Oct-16	25-Apr-16
29-Oct-16	2-May-16
5-Nov-16	9-May-16
12-Nov-16	16-May-16
19-Nov-16	23-May-16
26-Nov-16	30-May-16
3-Dec-16	6-Jun-16
10-Dec-16	13-Jun-16
17-Dec-16	20-Jun-16
24-Dec-16	27-Jun-16
31-Dec-16	4-Jul-16

*Standard room average of next eight nights by arrival date, including tax



- “**A must** for any first-timers planning a WDW visit! –Keri
- “Even armed with WAY more knowledge than 95% of WDW-goers, **we still found so many things we didn’t know** in this book” –C. Smith
- “The information will help make your trip exactly what you need it to be **without overwhelming you**” –Evan
- “The **best guidebook yet!**” – Henry
- “I’ve read several Disney guides **and this one is, by far, the best**” –Vicki

<http://amzn.to/1L30OuD>

 **the easy**
guide
to your
first
Walt Disney World Visit



2016

From the creators of the popular websites
easywdw.com & yourfirstvisit.net

DAVE SHUTE & JOSH HUMPHREY